



STRUCTURAL REARRANGEMENTS AND ALTERED GATING PROPERTIES OF DISEASE-ASSOCIATED CRAC CHANNEL PROTEINS IN CANCER

GUEST LECTURE by

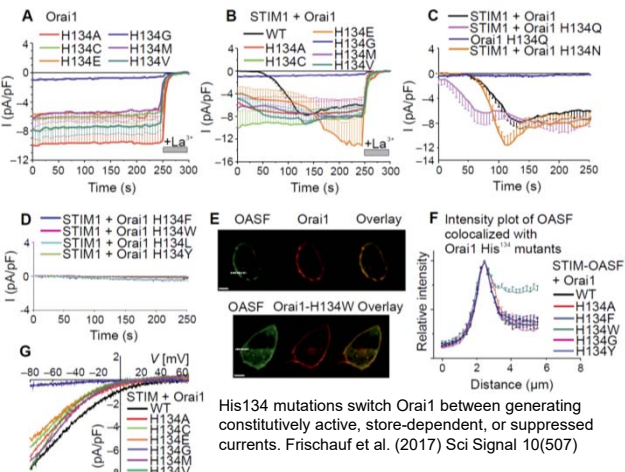
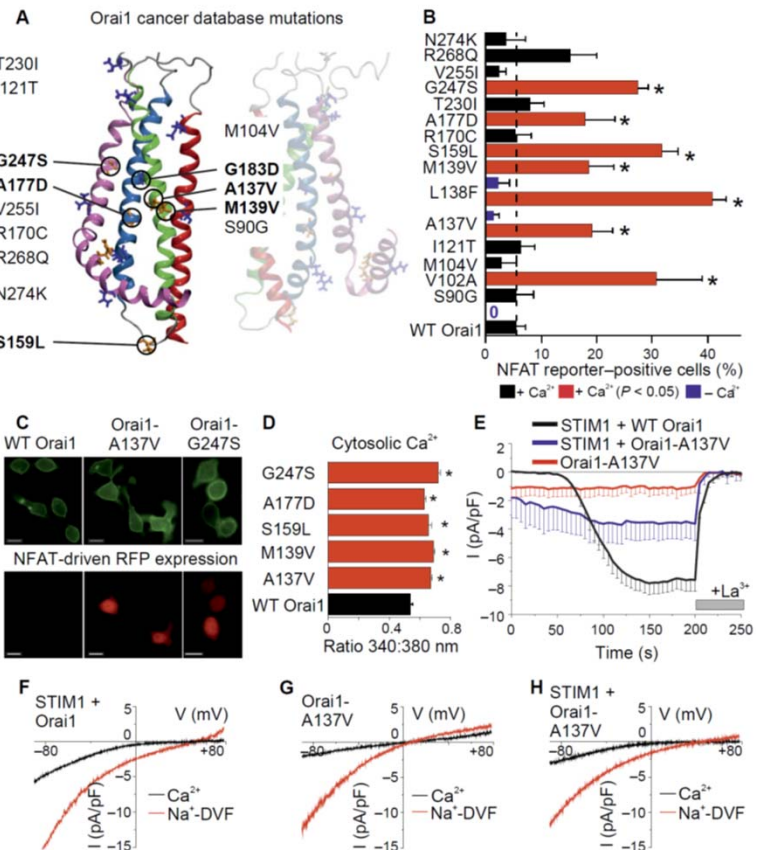
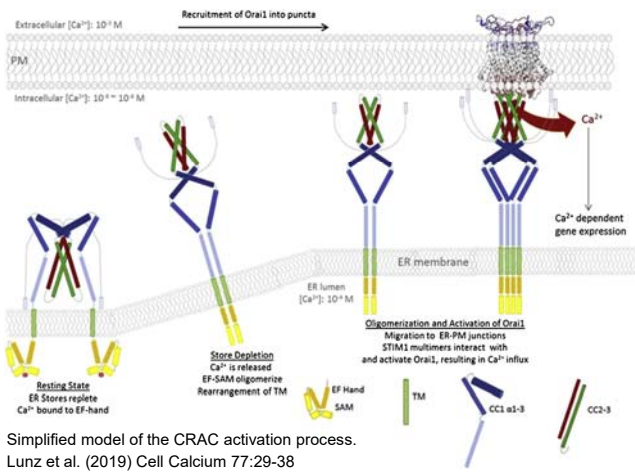


Dr. Irene Frischauf

Institute of Biophysics, JKU Life Science Center,
Johannes Kepler University Linz, Austria

Tuesday, 18.06.2019
16:00

Lecture Hall HS E1, Lecture Hall Center
(Auenbruggerplatz 15), MUG



Constitutively active Orai1 Ca²⁺ signals and NFAT activation induced by mutations detected through cancer database screening. Frischauf et al. (2017) Sci Signal 10(507)